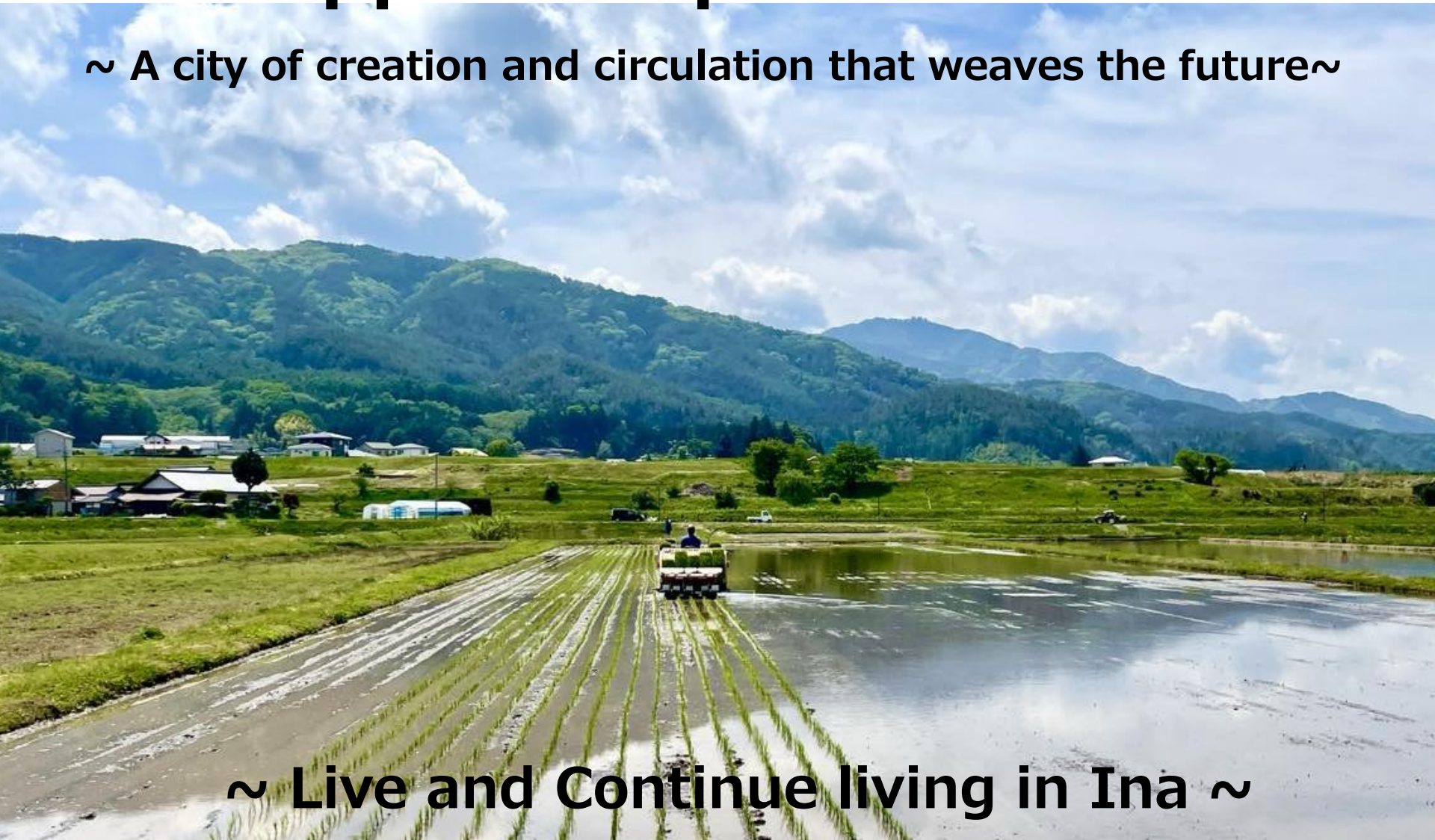


Aiming to become a model region that supports Japan

~ A city of creation and circulation that weaves the future ~

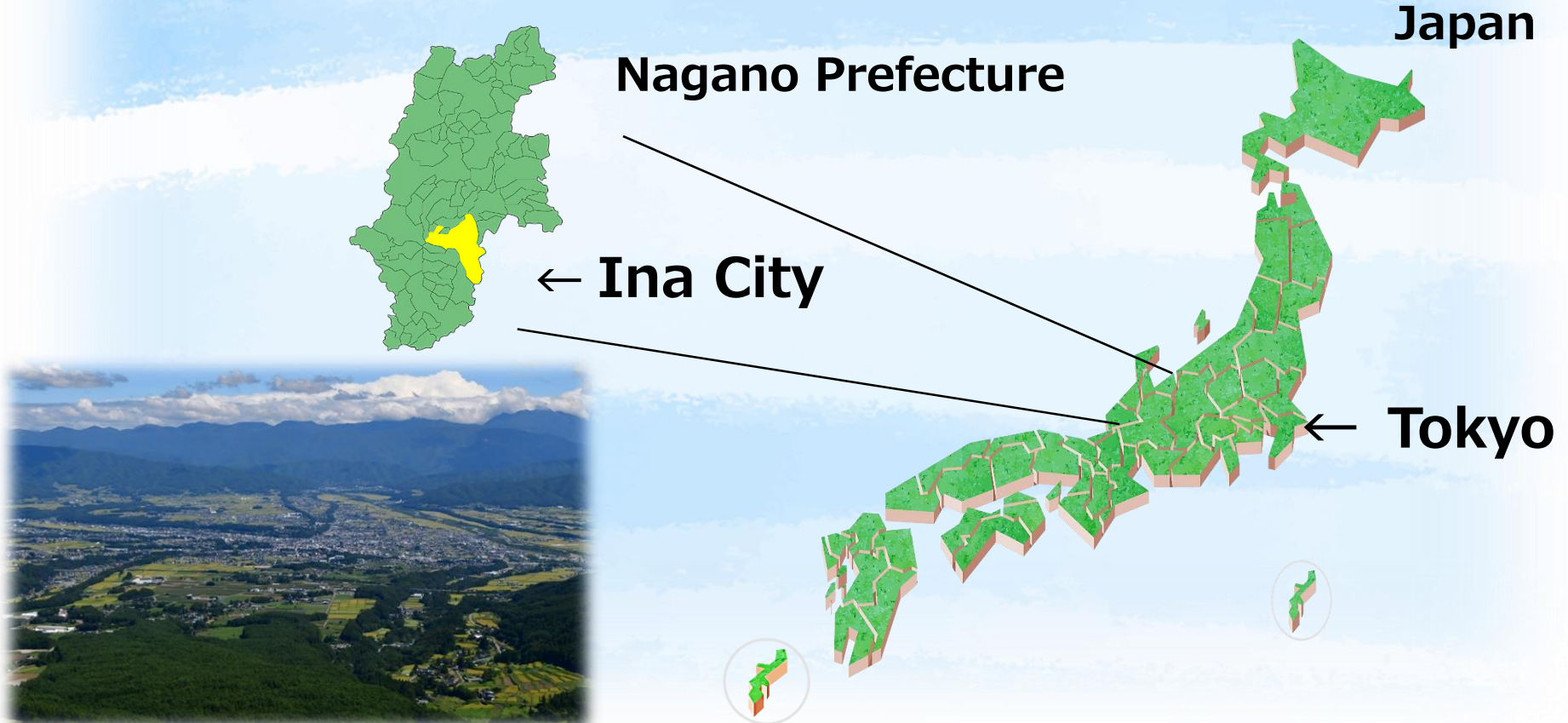


~ Live and Continue living in Ina ~

A natural city surrounded by and coexisting with two alps

A merger of 3 areas, Ina City, Takato Town, and Hase Village March 31, 2006
area 667.93 km² / Population 64,634 As of May 1, 2025

- Easier accessibility through the new Linear Chuo Shinkansen
- Centrally located between Tokyo and Nagoya
- Attractive nature with beautiful mountain and abundant water



Connection with Finland

City of Ina of Japan and Regional Council of North Karelia of Finland

To establish mutually beneficial exchanges and cooperation in the fields of forestry, forest industry, renewable energy, wood use and bioeconomy.

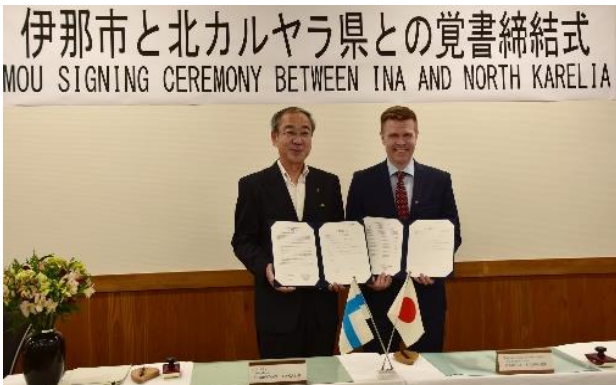


2019 Gov. Risto Poutiainen

**2019 Memorandum of Understanding
signed with Gov. Risto Poutiainen**

2022 Renewal of MOU with Gov. Markus Hirvonen

2024 Renewal of MOU with Gov. Markus Hirvonen



2022 Gov. Markus Hirvonen

- **Provide regular information on activities**
- **Exchange our knowledge on science, technology and innovation**
- **Promote mutual visits of staff and experts**

Connection with Finland

City of Ina of Japan and Regional Council of North Karelia of Finland

Mutual visits by governments and private businesses.



● 2019 Ina City visits North Karelia, Finland

● 2022 Delegation from North Karelia, Finland to Ina City

● 2023 Ina City visits North Karelia, Finland

- Learning about advanced Finnish education
- Study on forestry and wood utilisation

Connection with Finland

Visit to the Embassy of Finland in Japan in February 2024.

Discussions on collaboration topics



- Promotions connecting people, culture, products, etc.
- Education on 'forests and learning', international exchange, etc.
- Research on forests and trees, culture of lives with trees
- Japanese food, agricultural products and fermentation techniques
Business cooperation and industry creation

Connection with Finland

Explore collaboration with University of Helsinki and SU,
Ina City and VTT



- VTT researcher Ms. Sanna visited Ina City (May 2024)
Introducing our commitment about...
- Circular economy systems
- Forest digitalization
- Carbon neutral community

We have much in common with Finland,
including respect for environment and
installing new technologies.



Oct 2024 Ina Participates in Exchange Meeting Hosted by VTT

Ina City featured in innovative collaborative project examples

- For exchanges with Finland-related institutions
 - VTT vice presidents and researchers, ambassadors and officials etc.
 - Potential for further innovation through Finnish cooperation, e.g. introduction of new technologies, environmentally friendly city planning
- If successful, a model to be shared with the world



Nov 2024 Collaboration started between University of Helsinki, Shinshu University

Discussions and university-citizen exchanges



- Inter-university collaboration connected by Ina City has started.

- From University of Helsinki
Prof. Mari Sandell, Vice dean of Forestry and Agriculture Faculty
Mr. Mikael Marmivaala, communication specialist



- Through visiting local brewery and talking with people, they got interested in food culture and fermented foods in Ina.

Nov 2024 Renewal of MoU and Technical Exchange Meeting

MoU between North Karelia and Ina renewed until 2029



● **Participate in the Finland-Japan Joint Symposium on Forest Bioeconomy at Embassy of Finland**



● **Forestry and Forest Industry Technical Exchange Meeting with Researchers and Welcome Party in Ina**



Ina City, Nagano



Protected by mountains, little natural disaster
Sunny day rate:64% rainfall:1402mm/yr snow: 8days/yr

Altitude: 590~3052m Vivid changes of four seasons



Delicious local cuisine



Wild game meat



Soba



Insect as food



Wild plants

Organic food



**Seasonal
Handicrafts**



**Organic
school lunch**



**Kitchen
gardening**

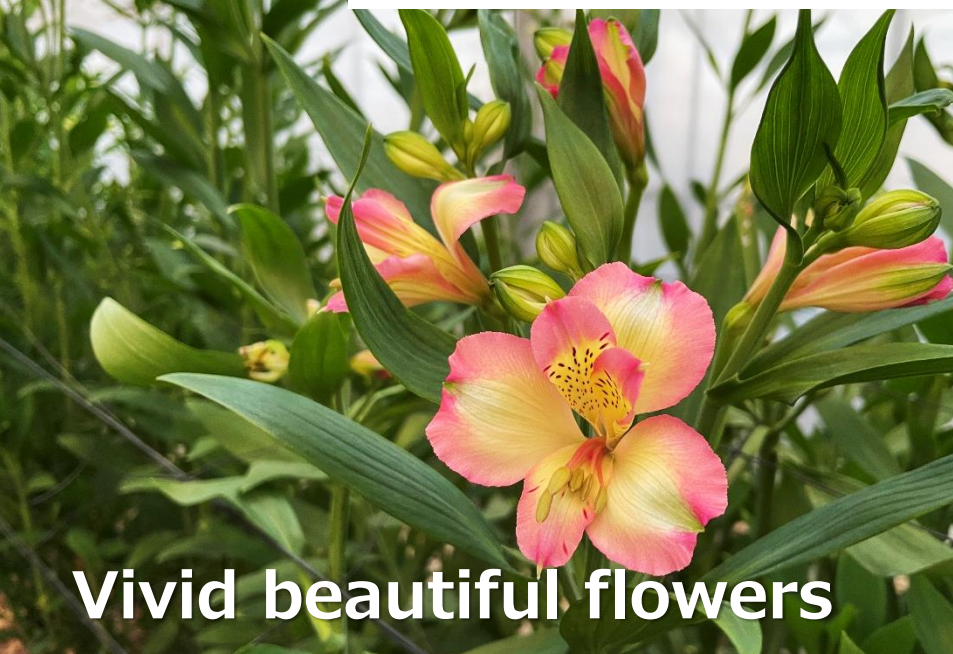


**Sake,
fermentation
culture**

Kind Community



Various fruits and vegetables



Vivid beautiful flowers



**Vegetables with rich flavor
grown in sunshine**



**Rice grown in fertile soil
and clear water**



**Sweet, juicy and
flavorful fruits**

Traditional culture and festival



Life and activities with nature



Community of local people and students



Challenges in Ina City

Population: 65,000

Area: 668km²

**Larger than
Central Tokyo**

Population decline

**Aging society
with low birthrate**

Labor shortage

Population decline

**Aging society
with low birthrate**

Labor shortage

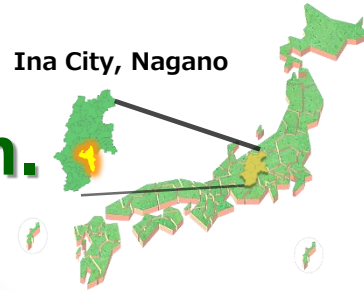
Aiming to become a model region that supports Japan



- Value primary industries and self-sufficient in food, water, and energy
- Convert to renewable energy by using local resources.
- Establish a recycling-oriented society

We aim to be a model sustainable community in Japan.

Ina City, Nagano



Mobile clinic van



Drone-based shopping service

Solutions with
advanced technology
Warm Smart City



Transportation of goods by
unmanned VTOL



Metaverse Ina City Ver.

Social Forestry
for the
Next 50 Years



Creating digital forest
information platform

Lives and learning
With forest



Woody biomass
use

Reduce CO₂
emission
For a carbon-neutral
society



What would you like to know about Ina?

Forestry

Live with forest

Industry (wooden yarn)

Advanced
technology

Smart city

Metaverse

Reduce CO2 emission

Eco-friendly initiatives

(Pellet,
• Wood paper)



伊那市
INA-CITY

Remote clinic

Welfare × technology

shopping transport

子育て・教育

保育

ICT教育

Life and agriculture

People

Young
people

Domestic
migrants

Social forestry

Promote “50-year forest vision” that supports resources and employment

Maintenance



Water resources



Land preservation



Landscape



Wooden public facilities



Using wood



Create jobs



Citizens participate



Train station



Walls / desks



Daycare

Wooden toys



Creating business

Game meat cuisine



Collaboration with Finland



Forestry work trial



Carbon offset



Outdoor activities



Thinly sliced wood paper



Trail tour by mountain bike



Thinly sliced wood paper

Ina 50-year Forest Vision

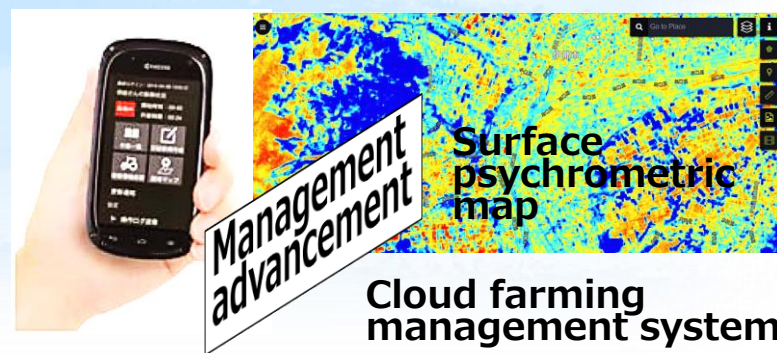
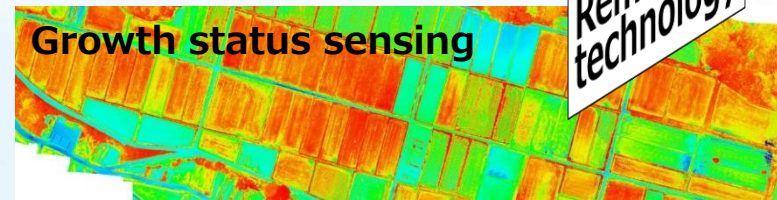
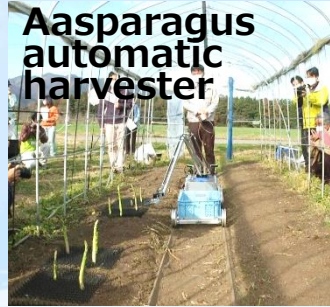
Passing on forests to the next generation



- Considering the production, supply, and consumption of wood and creating a life with wood
- Transform to an industrial structure where profits and value circulate within the region
- Citizen group hold events that connect people and forests, e.g. concerts, walks, campfires, picking wild vegetables.

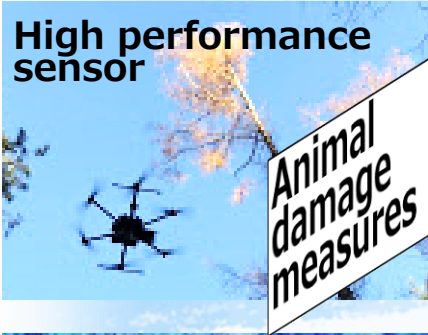
Smart agriculture

Realizing “profitable agriculture” by establishing data-based farming management technology

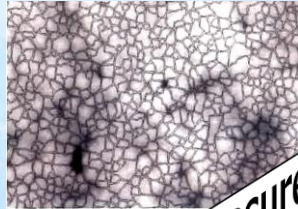


Smart forestry

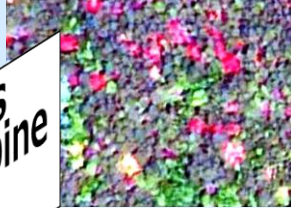
Improving the efficiency and sophistication of forestry management by reducing labor and improving



Laser image



Ssatellite image

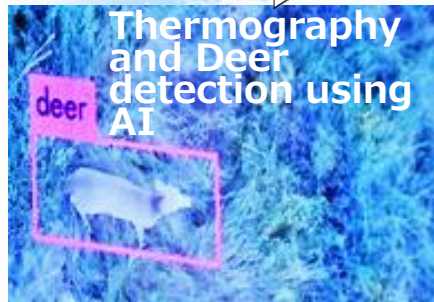
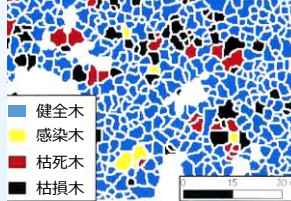


Aerial image



Measures against pine weevil

Damage classification map



Remote wood collection machine



forest work



High performance machinery

Laser measurement



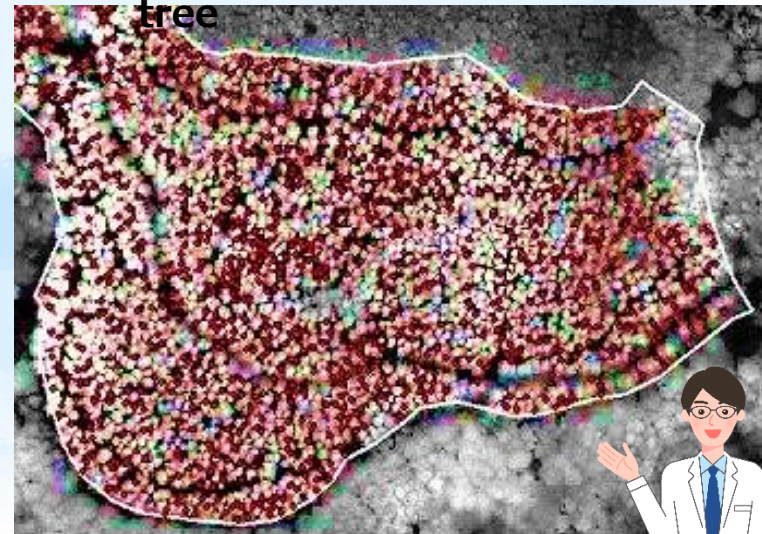
Sharing information on felled trees



Volume survey

Calculation of thinning costs by automatically extracting felled trees

Red part: felled tree



Sustainable environment

From fossil fuels to renewable energies

Establishment of a recycling-oriented society

Pellet stoves / boiler



Driftwood into chips



Power generation with woody biomass



Microgrid



Water power plant

Consume locally and ethically



Low emission



Solar panels

KYOGI- Thinly sliced wood paper



No plastic



No food waste

Wheat straws



Reusable bag



LED lighting



EV made in Turkey



Charging station



Sustainable environment

From fossil fuels to renewable energies
Establishment of a recycling-oriented society

Not fossil fuels, but renewable energies

- Top in Japan in woody biomass penetration Introduce wood/pellet stoves and boilers in schools, etc.
- General households and public facilities CO2 emission reduction targets

53% by the end of FY2025
45% by the end of FY2024



Sustainable environment

From fossil fuels to renewable energies

Establishment of a recycling-oriented society

Alternative products for disposable plastics

Thinned wood from red pine



Wheat straw



Loofah scrubbing brush



Agriculture and forestry cooperation with the participation of people with disabilities

Solutions with advanced technology

Social Implementation for Convenient Lives **You I market**



● New shopping assistance service using drones

● Support for those who have difficulty in going shopping in mountainous areas

● Warm and friendly service by fusion of technology and people

● Public-private co-creation
Achieve social implementation through a series of experiments

Solutions with advanced technology

Social Implementation for Convenient Lives **Gurutto Taxi**

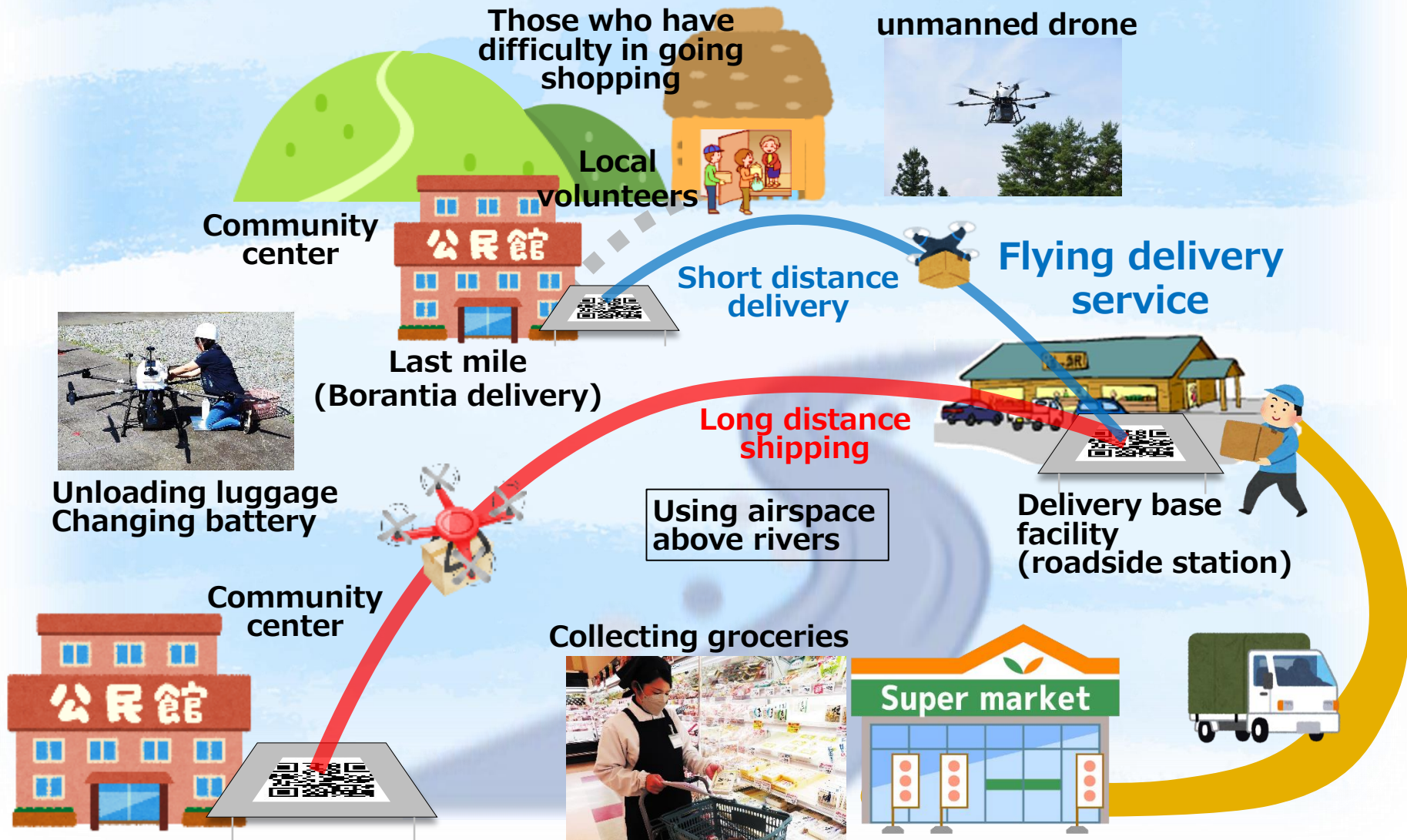


- For the elderly, those who have returned their driver's license, and others with mobility difficulties
- AI auto-dispatch rideshare cabs for 250 yen
- Increase opportunities to go out for hospital and shopping, etc. leads to create social connections
- Expand to other areas

Drone service

~You I Market~

Supply chain from getting product to ordering, delivery, and payment



AI automatic dispatch/Ride-sharing service ~ GURUTTO Taxi ~

Optimizing regional public transportation with mobile MaaS

Smart access vehicle
- SAVS -



Vehicle dispatch
calculation algorithm

(Machine learning)



Ride-hailing
app→



Shared ride



Call center



Device on car

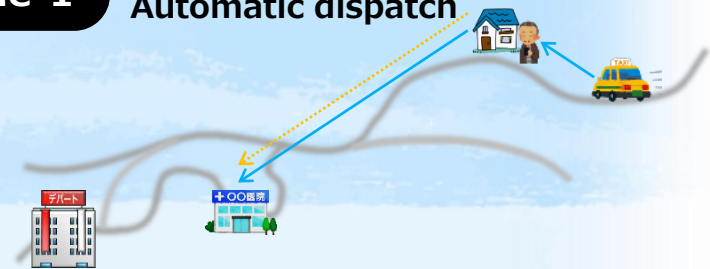


Concept

- New transportation system with no need to fix times and routes
- Improvement of convenience for by providing door-to-door service
- Maximum transportation efficiency with minimum number of vehicles

Scene 1

① For ride requests
Automatic dispatch

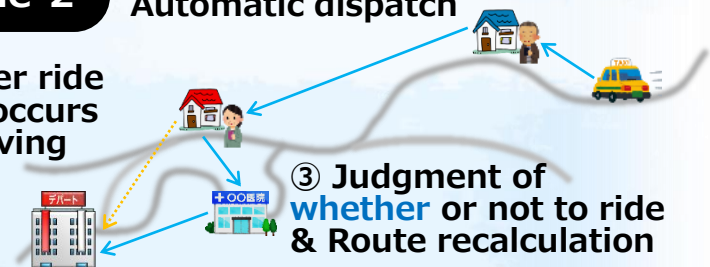


Scene 2

① For ride requests
Automatic dispatch

② Another ride
request occurs
while driving

③ Judgment of
whether or not to ride
& Route recalculation

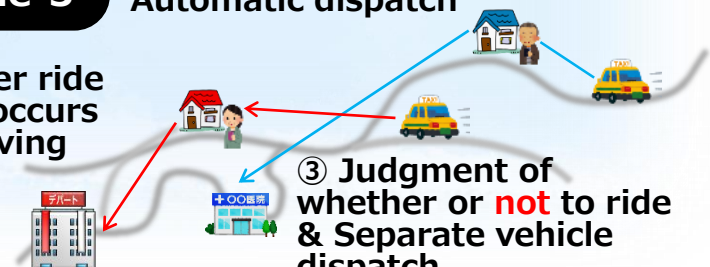


Scene 3

① For ride requests
Automatic dispatch

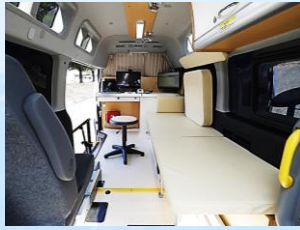
② Another ride
request occurs
while driving

③ Judgment of
whether or not to ride
& Separate vehicle
dispatch



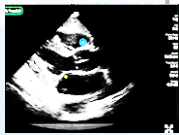
Medical vehicle without a doctor ~ Mobile Clinic ~

Comprehensive healthcare through telemedical MaaS



Interior

- INA Health Mobility -



Clinic



Pharmacy



Electronic prescription



【D to P with N】



Hospital

Digital dispensing

Multi-domain information system



City hall
市役所



Medical delivery



Online medical treatment
Examination for pregnant women



Variety of medical equipment



**550km
high**

(HAPS)

Project to transport supplies to mountain huts using unmanned VTOL aircraft

K-RACER X2

loading capacity 200kg
Continuous Distance 100km
Altitude tolerance: over 3,100m

Wi-Fi

Satelite

Senjo hut, South Alps

Nishi-Komahut, Central Alps

LPWA

LTE (4G)

Shiomi hut, South Alps

unmanned delivery



Ina City launches unmanned aerial vehicle project to transport supplies to mountain lodges.





人気移住地ランキング第1位！

人が集まり、豊かに暮らし、
多様性がある**持続可能な地方都市**へ



Learning in a relaxed environment



**Schools and daycare promote learning in forests.
Schools without grade card, unique small school with accessible forest.**

Generous support and environment for raising children



In nursery school, we find
“wonder” and “fun” in the
abundant nature, develop senses
and wisdom, nurture motivation.



Learning through playing

There is much to stimulate curiosity in the nature.

Interested



Wonder

Curious



Children with
motivation to try
various things



Want to try



**Eager to
know**

Spend time in forest

Childcare in local nature



Experience promotes
learning



By having a lot of experiences in nature that stimulate the senses, the basic skills for human life, such as the ability to think and communicate, are acquired.

ICT education

Promoting independent learning and securing diverse educational opportunities through computerization of education



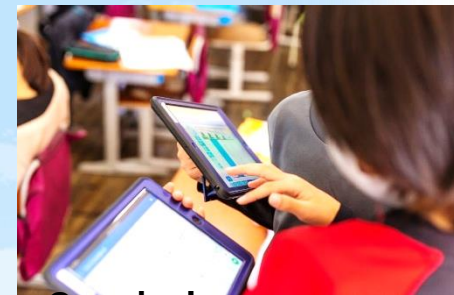
AI drill



Class support cloud



Electronic blackboard/
document camera



One device per person
environment



Distance classes



Forest classroom



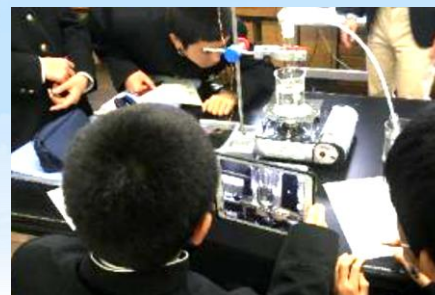
In-hospital class



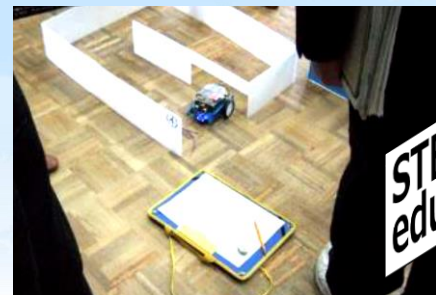
International exchange



Programming technology



IoT utilization technology



Sensing technology



Visual teaching materials

Embrace life with forest

For people's well-being,

- We live with the forest
- We think about the future of the earth
- We utilize new technologies



Live and Continue living in Ina

We aim to be a model
sustainable community in Japan.



What we (delegation members) do

- Event to get people familiar - "Forest Joy"
- Plan and design wooden new high school to be built
- Architecture that is Eco-friendly and
match local environment
- Fermentation culture
Brewing Sake using whole rice without polishing
- Package design with less waste

DX-related awards of Ina City

Year	Name	Classification	Content	Target business	Sponsored by
2019	Impress DX Award	Project Category Second Grand Prix	Efforts to realize new businesses and services through digitalization	Mobile clinic	Impress Co., Ltd.
2020	Japan ICT education Award	Minister of Economy, Trade and Industry Award	Efforts as a model case of ICT education to solve educational issues	ICT education	National ICT Education Mayors Council
2020	MaaS Award	Sustainability Category Excellence Award	Innovative and game-changing initiatives in the mobility field	Mobile clinic	IAAE Executive Committee
2020	Cable Award	Grand Prix	Excellent promotional efforts as part of cable communication activities	Life support channel	General incorporated foundation japan cable tv federation
2020	MCPC Award	User category special award	Remarkable efforts in advanced systemization through mobile computing	Kukuri trap sensor	Mobile computing Promotion consortium
2021	Best of Japan Drone Award	software・Application department Grand prize	Efforts to implement Japan's first commercial drone delivery service operated by a local government	“Yuai” Market	Institute Japan UAS industry promotion Council/ Co., Ltd.congrès
2021	MCPC Award	Grand Prix/Minister of Internal Affairs and communications Award	Remarkable efforts in advanced systemization through mobile computing	“Yuai” Market	Mobile computing Promotion consortium
2022	MCPC Award	User department mobile public award	Remarkable efforts in advanced systemization through mobile computing	Mobile clinic	Mobile computing Promotion consortium
2023	MCPC Award	User department mobile public award	Remarkable efforts in advanced systemization through mobile computing	Gurutto Taxi Digital taxi	Mobile computing Promotion consortium
2023	Platinum Award	Excellence Award Digital local revitalize award	Creating innovations by local resources and new technology	Ina local GovTech Promoting 50yr forestry vision Reducing CO2 from Ina	General incorporated foundation Platinum Network

Mayor's Vision for the City

We value primary industry and remain a region with stable self-sufficiency in food and water. We produce food locally and take good care of our forests.

The water will be used for drinking, agricultural and industrial purposes, and will also be used to generate electricity through small-scale hydroelectric power generation. For the future, we must create a sustainable community with our own hands, rather than seeking food, energy, and human resources from outside.

Ina City has been attracting attention for its education, agriculture, forestry, and sustainable lifestyle, and has seen an increase in the number of immigrants in recent years, Ina City has been ranked No. 1 in Japan for two consecutive years among the most popular cities for prospective immigrants.

The diverse people and new ideas will lead to the realization of a sustainable society. At the same time, we must continue to value education so that our children can feel the good qualities of their hometown.

Mayor's Vision for the City

What we are aiming for now is a “clan”, a regional governance structures that existed in Japan 300 years ago. Industry, human resources, and food were all available within the clan. The strongest regions are those that are able to do things like a clan. We, who live in a regional city, should start with what we can do to achieve this. If we can spread this model throughout Japan, it will naturally lead to revitalize other regions in countryside.

**We hope to learn a lot from Finland’s forests, nature, and learning.
Education: Entrepreneurship, practical learning.**

We want to achieve this by sharing this vision of the future with our citizens.

In order to realize a sustainable community, we will live with forests, respect the beautiful environment, and introduce advanced technologies to create Ina City where all people can lead happy lives.